



# Information Management System for Mine Action (IMSMA)

## Support to MBC Reporting

**Alan Arnold**

**Project Manager, IMSMA**

**Geneva International Centre for Humanitarian Demining**



# IMSMA

## Support to MBC Reporting

- ❑ **What are the requirements?**
- ❑ **What can IMSMA do to help now?**
- ❑ **What can users do to improve IMSMA reporting?**
- ❑ **What does the future hold?**



# IMSMA

## Convention Requirements

- **Data Collection - Article 5 Para. 2**
  - **Suspected Areas**
  - **Known Areas**
  - **Marking & Control**
- **Data Reporting - Article 7**
  - **Required Reporting**
    - ◆ **Para. 1.c - Location of Mined Areas**
    - ◆ **Para. 1.g - Mines Destroyed**
    - ◆ **Para. 1.i - Measures Taken Art. 5.2**



# **IMSMA**

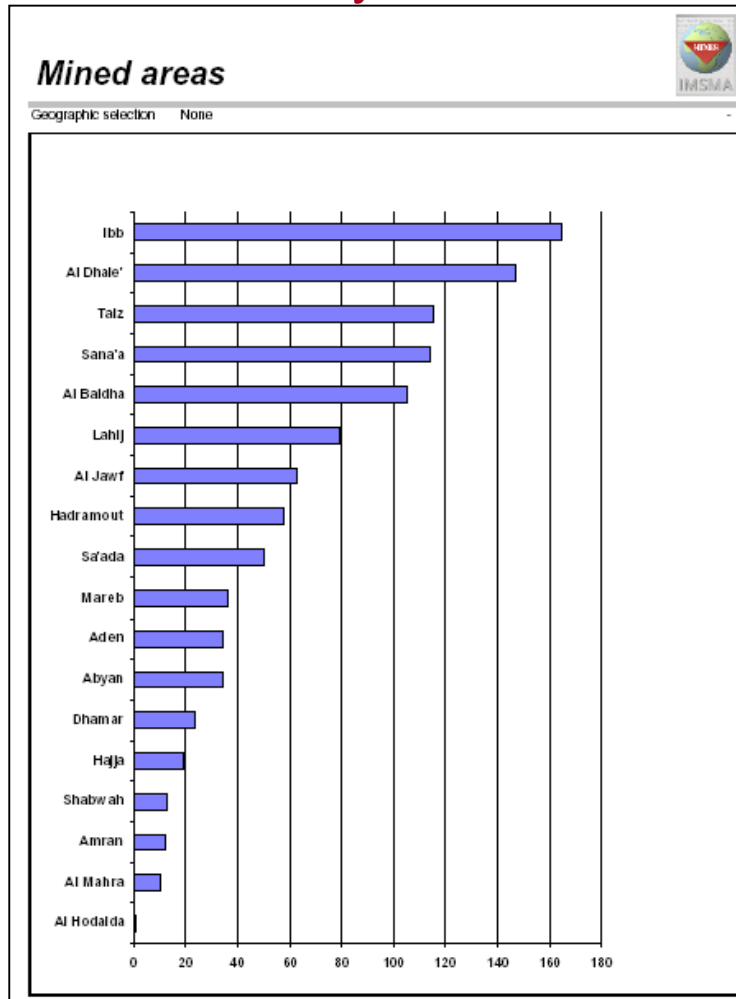
## **Data Collection Support**

- **Article 5 Section 2**
  - **Identification Activities Required**
    - ◆ **Suspected Areas**
    - ◆ **Known Area**
    - ◆ **Marking & Control**
  - **Available IMSMA Reports**
    - ◆ **Hazardous (Dangerous) Area**
    - ◆ **Mined Area**
    - ◆ **Clearance Area**
    - ◆ **Technical Survey**

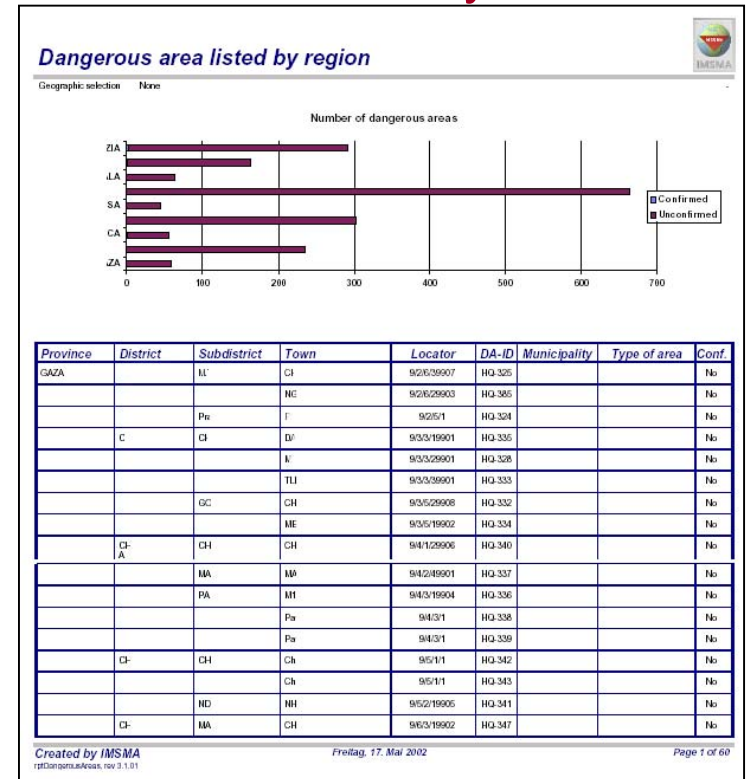


# IMSMA Mined Area Report Hazardous Area Report

## Mined Areas by Province



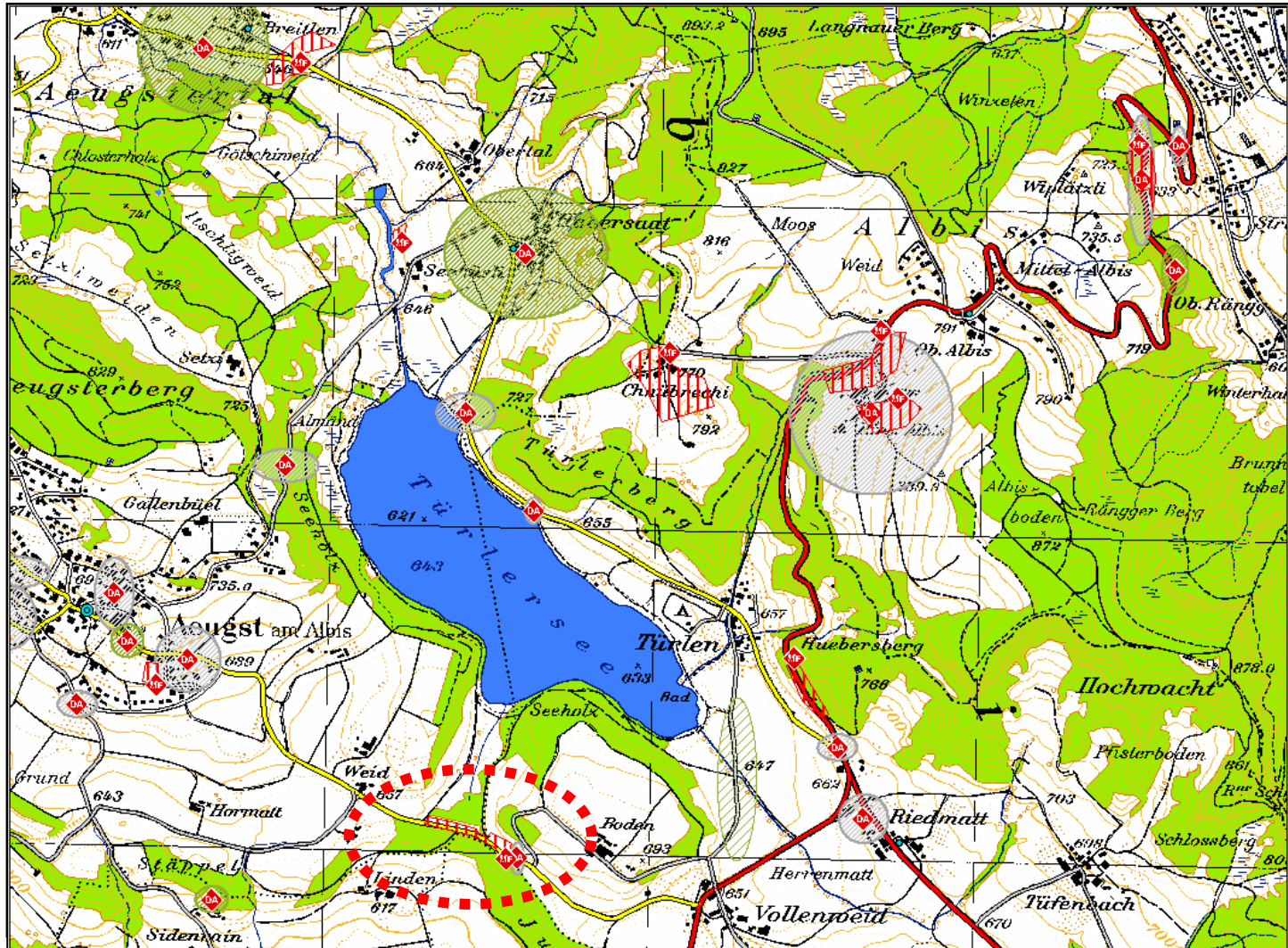
## Hazardous Areas by Province





# IMSMA

## Location of Hazardous Areas





# IMSMA

## Required Reporting

- **Article 7 Sections 1 & 2**
  - **Sec. 1.c - Location of Mined Areas**
    - ◆ Type, Quantity, When Emplaced
  - **Sec. 1.g - Mines Destroyed**
    - ◆ Type and Quantity
  - **Sec. 1.i - Measures Taken Art. 5.2**
    - ◆ Provide Warning to the Population
  - **Sec. 2 - Annual Update**
    - ◆ NLT 30 April to UN Sec. General
    - ◆ Report Covers Previous Calendar Year



# IMSMA

## IMSMA Support to Art. 7

- **Sec. 1.c - Mined Area Locations**
  - **Data Required**
    - ◆ **Known and Suspected Area Locations**
    - ◆ **Device Type, Quantity and When Emplaced**
  - **Data Source**
    - ◆ **IMSMA Through On-Going Operations**
  - **Available IMSMA Reports**
    - ◆ **Hazardous (Dangerous) Area**
    - ◆ **Mined Area, Minefield**
    - ◆ **Technical Survey**
  - **What level of detail is required?**
    - ◆ **Province, Community, Individual MF**





# IMSMA

## IMSMA Support to Art. 7

- **Sec. 1.g - Mines Destroyed**
  - **Data Required**
    - ◆ **Device Types and Quantity Destroyed**
  - **Data Source**
    - ◆ **IMSMA Through On-Going Operations**
  - **Available IMSMA Reports**
    - ◆ **Devices Cleared**
  - **IMSMA Analysis Tool**
    - ◆ **Progress of Operations**



# Progress reporting on clearance activities (a detailed Article 7g report)

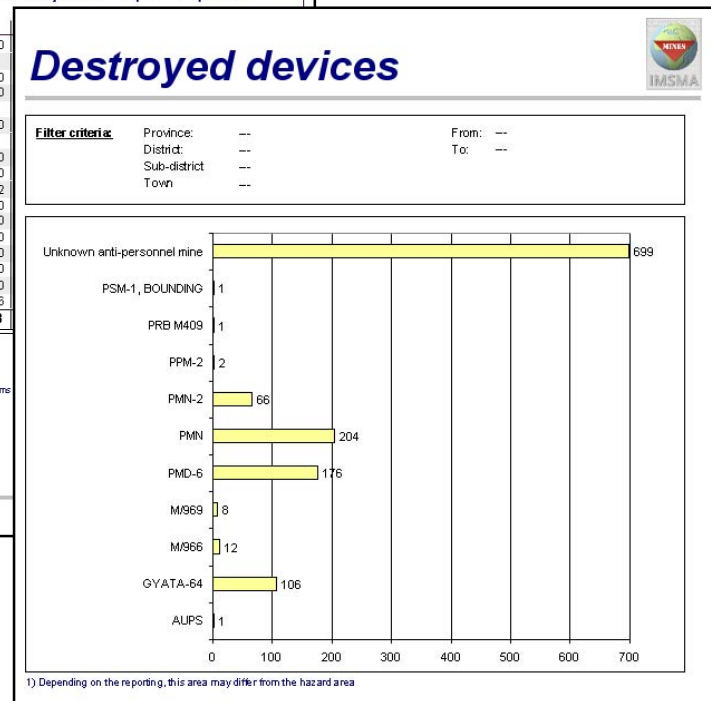
### Progress of demining operation

**Filter criteria:** Province: --- From: ---  
 District: --- To: ---  
 Sub-district: ---  
 Town: ---

Province	Proces	Area cleared [sqm] <sup>1)</sup>		Hours spent		Devices destroyed within specified period <sup>2)</sup>	
		Within <sup>3)</sup> spec. period	Total to date	Within <sup>3)</sup> spec. period	Total	AP	AT
Province_1	Clearance	162796	589010	2176	16755	86	0
	Technical Survey		142		456		
Province_10	Clearance	3281758	4013975	21970	22094	1553	0
Province_2	Clearance	14390247	14391524	1200	1328	3	0
	Technical Survey		1		152		
Province_3	Clearance	405	6171	136	1072	0	0
	Technical Survey		1		36		
Province_4	Clearance	719	8311	160	992	0	0
Province_5	Clearance	1199155	1199155	8576	8576	4299	0
Province_6	---	155339	155339	1128	1128	16	2
	Clearance	1187945	3499187	6022	19446	162	0
	Technical Survey	56586	72537	184	360	9	0
Province_7	Clearance	1410006	5360513	8086	11254	1738	0
	Technical Survey	235831	235831	1968	1968	38	0
Province_8	---	23011	35533	469	939	1	0
	Clearance	4001915	5709097	29641	35713	1606	100
Province_9	Clearance	956775	1004474	5508	6129	208	6
<b>Total</b>		<b>77062488</b>	<b>36280802</b>	<b>87223</b>	<b>128397</b>	<b>9719</b>	<b>108</b>

All numbers are from progress reports.  
 1) Depending on the reporting, this area may differ from the hazard area  
 2) "Total devices destroyed" does not include "m"  
 3) Only reports with a valid "end of work" date within the specified period are considered for the calculation. This can lead to differences if sums.

Created with **IMSM A Analysis** Sonntag, 19. Mai 2002  
 Progress of demining operations, rev. 1.0





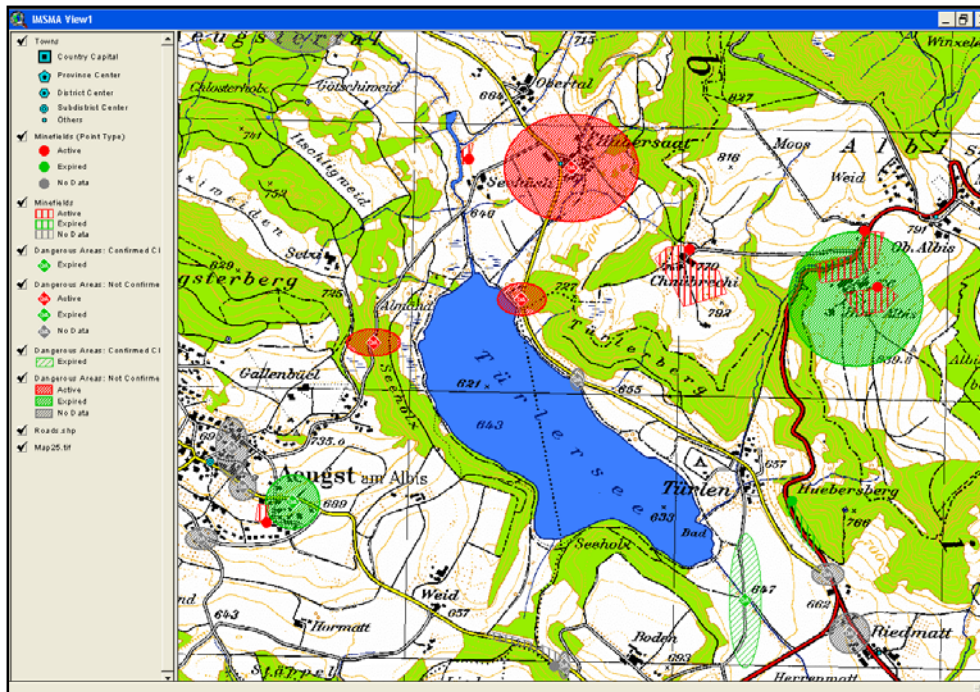
# IMSMA

## IMSMA Support to Art. 7

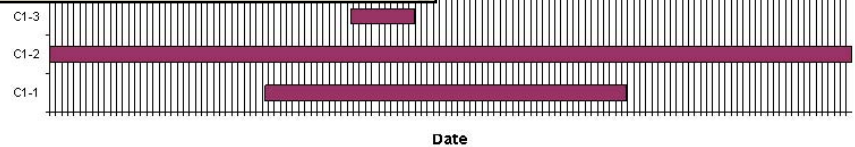
- **Sec. 1.i - Measures Taken Art. 5.2**
  - **Data Required**
    - ◆ **Measures Taken to Warn**
  - **Data Source**
    - ◆ **IMSMA Through On-Going Operations**
  - **Available IMSMA Reports**
    - ◆ **Hazardous (Dangerous) Area**
    - ◆ **Mined Area, Clearance Area**
    - ◆ **Tasking Reports**
  - **IMSMA Analysis Tool**
    - ◆ **Marking and Area Reduction Status**



# IMSMA Tasking Reports



of tasks





## IMSMA

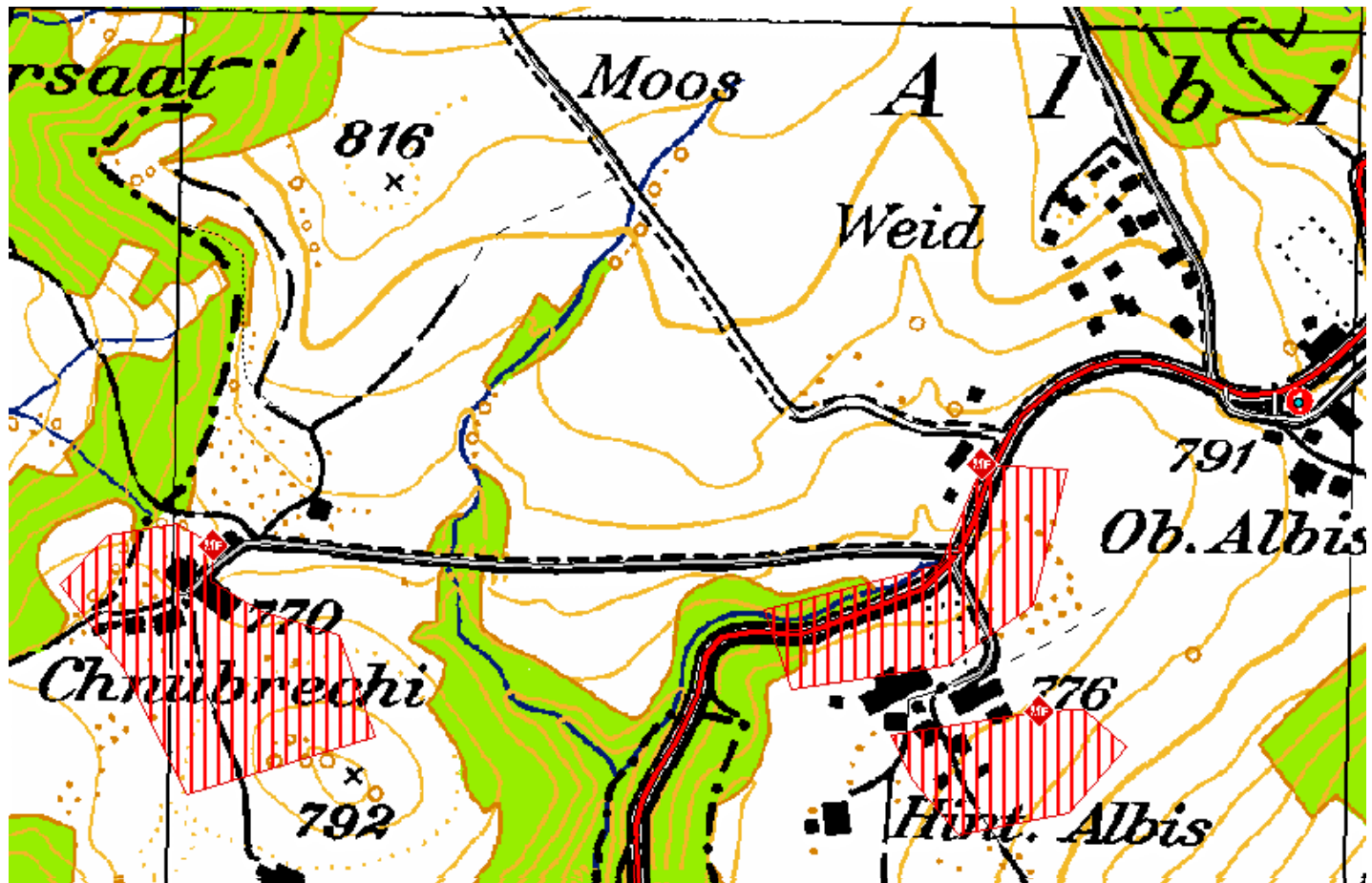
### Status of Marking and Area Reduction Activities (Source: Technical Survey Data)

Technical Survey complete	Yes ▼
Number of mined areas marked	
Province ▼	Total
Province_1	5
Province_10	1
Province_6	2
Province_7	29
Province_8	1
Province_9	1
Grand Total	39



# IMSMA

## Status of Marking and Area Reduction Activities (Source: Technical Survey Data)





# IMSMA

## Improving MBC Support

- **Report Content**
  - **Specific Requirements**
    - ◆ Level of Detail?
    - ◆ Province, Town, Minefield, Aggregated
  - **Detailed Format Instructions**
- **Create IMSMA Standard Report**
- **User Feedback**
  - **What Works? What is needed?**



# **IMSMA**

## **Today & Tomorrow**

- **IMSMA Version 2.2 - Now**
  - **Article 5 Data Collection**
  - **Article 7 Required Reports**
- **IMSMA Version 3.0 – Sept 2002**
  - **Improves Status Reporting**
- **IMSMA Analysis Tool – Nov 2002**
  - **Improves Data Analysis**
  - **Improves Report Generation**